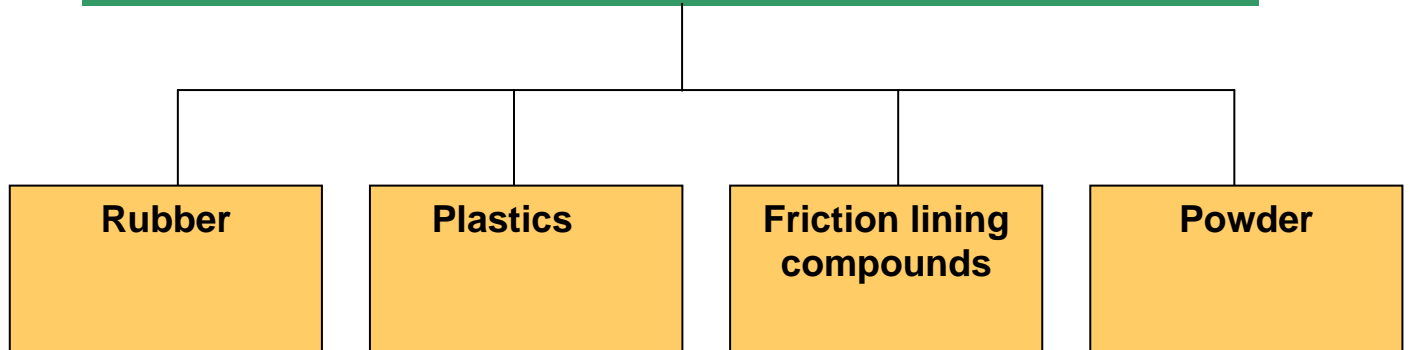


Down-stroke presses

**Type WKP S
for mouldings**



Hydraulic presses and fully automatic press systems for



The WKP S range is a range of presses for the manufacture of mouldings.

A planned modular system makes adaptation to your individual task requirements possible. From the fully automatic press system to the simple press with manual operation.

More than standard !

The data described following is our standard.

Additionally we offer modified standard and customized solutions.

Technical description

Benefits

- ✓ Ergonomic operating height by down-stroke design
- ✓ Optimal cycle times due to down-stroke design
- ✓ High process safety due to vacuum chambers
- ✓ Intuitive control „Press-easy“
- ✓ „5-times Safety“ of the mechanical components
- ✓ 5 years warranty for all bearing components
- ✓ Modular concept from modular system
- ✓ Use of high-quality standard components
- ✓ Solid machine construction made in Germany

Description

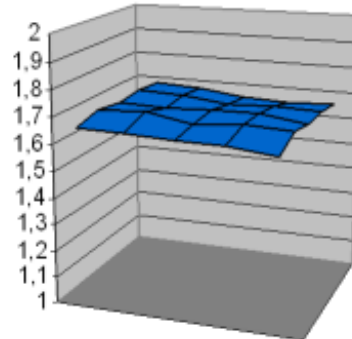
1.) Mechanic

- Press engineered as a down-stroke column design
- Pressure plates made of solid rolled steel, deflection resistant, 5-times safety
- Clamping system fully hydraulic, with quick-fill action
- Pressure cylinders made of high strength wrought or rolled steel
- Press piston made of solid gravity die cast, surface 450-550 VHN, chilled zone 5-15 mm, grounded
- Dynamic sealing of main piston by means of redundant special sealing system
- Rapid closing cylinder ISO 6022, double-acting, with chromium plated and grounded piston rods



- Pressure plates made of solid rolled steel, deflection resistant for highest parallelism
- Movable pressure plates precisely guided by guide columns
- Column guides made of highly wear-resistant bronze semi-monocoques flanged with double wipers
- Heating plates machined out of solid blocks, electrically heated
- Heat insulating plates between heating plate and pressing plate

Parallelism under full load < 0,2 mm/m



2.) Hydraulic

Hydraulic drive:

- Hydraulic drive by silently running axial piston pump.
- Proportional control with integrated closed loop pressure control
- Proportional flow control
- Subsystem including a preload and unload manifold to provide a rising or falling force characteristic
- All functions of the press are controlled right out of the pump and ensures highest reproducibility

Hydraulic control:

- Hydraulic control of compact design
- Press safety system according to EN 289 designed as a high integrated manifold
- Designed for easy maintenance
- Leakage-free connection system for all piping and connections



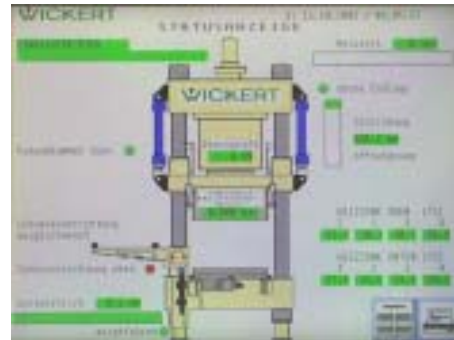
Filter:

Increasing of reliability by effective filtration:

- High pressure
- Return
- Intake air
each 10 µm
- Filler

3.) **Electric**

- SPS, Siemens type S7
- Control cabinet right side of press
- Control buttons, control lights and Emergency-off
- Selector switch for hand- and automatic operation and setting
- Operating panel MP 277, 10", colour
- Internal memory store for machine programs



4.) **Safety**

according to EN 289

- Safety fence around
- Service door in the rear of the press
- Light barrier operation side

Simply ask for our extensive range of options and accessories to suit your application.

Technical data Down-stroke presses

WKP S		800	2 000	3 000	4 000	5 000	6 400	8 000
Pressing force at 250 bar	kN	800	2 000	3 000	4 000	5 000	6 400	8 000
Heating plate dimension (W*D)	mm ²	300 x 400	500 x 500	600 x 600	700 * 700	700 x 700	800 x 800	900 x 900
Pressing force max at 280 bar	kN	970	2 250	3 500	4 500	5 500	7 150	8 720
Daylight	mm	500	500	600	600	600	700	700
Piston stroke	mm	500	500	500	500	500	600	600
Operating height	mm	900	900	900	900	900	900	900
Heating plate temperature Standard / optionally	°C	210 / 250						

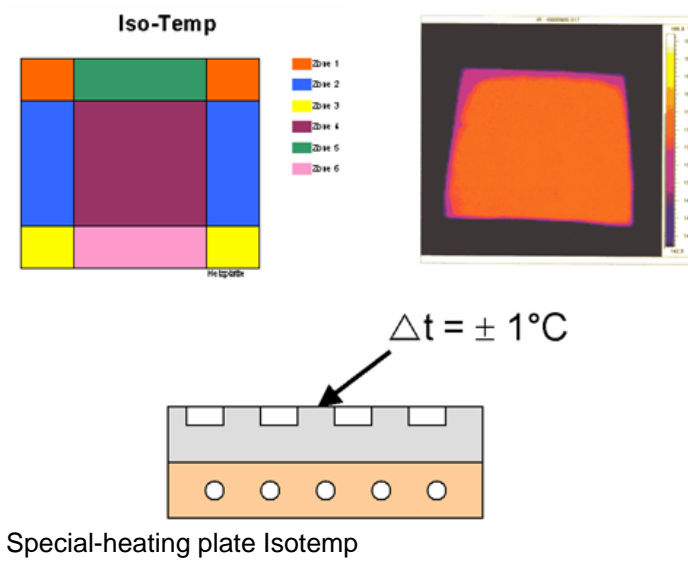
WKP S		10 000	16 000	20 000	25 000	40 000	60 000
Pressing force at 250 bar	kN	10 000	16 000	20 000	25 000	40 000	60 000
Heating plate dimension (W*D)	mm ²	1000 x 1000	1200 x 1200	1600 x 1600	2200 x 2200	2600 x 2600	3000 x 3000
Pressing force max at 280 bar	kN	11 000	17 800	22 000	26 600	43 100	67 350
Daylight	mm	700	900	900	900	1 100	1 100
Piston stroke	mm	600	700	700	700	900	900
Operating height	mm	900	900	1 000	1 100	1 200	1 200
Heating plate temperature Standard / optionally	°C	210 / 250					

More than standard!

Technical data above are our standard.

Additionally we offer modified standard and customized solutions.

Customizing



Dosing device, fully air-conditioned



Robotloading, robot extraction



Swivelling table with ejector for the production of grinding wheels or similar



Gravimetric dosing of powder