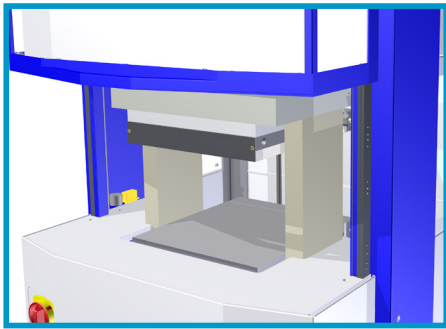


# Laboratory Platen Presses

LabEcon series: for the best price/quality performance



## Features New LabEcon Design:

- Compact and simple to operate
- Reliable construction
- High safety level
- Ergonomic
- Service friendly
- Small footprint through pillar design

The Fontijne laboratory Platen Presses are being used in the polymer processing, rubber, and composites industry. The presses are utilized as sample preparation equipment for: Quality control, Research and Materials development

The LabEcon series 150/300/600 are presses specially designed for basic pressing operations. For straightforward automated pressing operations, these presses offer a high quality as well as an economical solution. Fontijne Grotnes presses have a perfect fit for laboratory- and research centers, because of its small footprint and configurable design.

### Design Elements:

**Press frame:** an ergonomic mode of operation because of the 2 columns press frame. The lower platen is connected to the hydraulic cylinder and an upper platen is mounted on the press frame.

**Press Platens:** equipped with electrical cartridge heating elements and cooling channels, which make it possible to heat-up and cool-down the product. The newly designed platens guarantee an accurate temperature distribution over the platen surface.

**Hydraulic unit:** The dual integrated pumps ensure fast closing and accurate pressing and adjust the pressure automatically to maintain a stable press force on the sample product.

**FONTIJNE  
PRESSES**  
When quality matters

# Laboratory Platen Presses

LabEcon series: for the best price/quality performance

## Control Systems

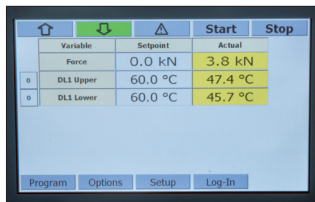
Three new control systems are developed in-house for the LabEcon series. The features include digital press force and temperature controllers.

The standard manual control has a basic user interface, this can be extended by a programmable and PC control system.

## Technical data

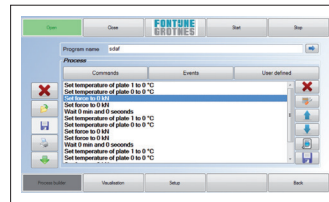
LabEcon		150	300	600
Closing Force (max.)	kN	150	300	600
Platen size	mm	320 x 320	320 x 320	400 x 400
Cylinder stroke	mm	150	200	200
Specific platen pressure	N/cm <sup>2</sup>	146	293	375
Capacity per plate	kW	3.2	3.2	5.0
Max. temperature	°C	300	300	300
Closing speed	mm/sec	30	30	16
Weight nett/Gross	kg	620/650	620/650	820/850
Length	mm	790	790	790
Width	mm	880	880	880
Height	mm	1790	1790	1790

## Manual Control



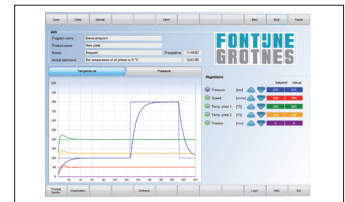
- Temperature & pressure control
- 7" touch panel
- Storable table program with 3 phases on time base

## Programmable Control



- Temperature & pressure control
- 7" touch panel
- Storable recipe builder
- Simple Process Pre View
- Read-out of Data Acquisition
- Meets ASTM/DIN/ISO Standards

## Pro-View Control



- Temperature & pressure control
- 15" touch panel
- Storable recipe builder with commands and events
- User defined subroutines
- Process Pre View
- Data Acquisition of selectable parameters
- Meets ASTM/DIN/ISO Standards



Fontijne Grotnes BV  
Vlaardingen, Netherlands  
Phone: +31 (0)10-434 82 33

[platenpresses@fontijnegrotnes.com](mailto:platenpresses@fontijnegrotnes.com)

[www.fontijnepresses.com](http://www.fontijnepresses.com)

Represented by:

C & M / COMPONENTS & MACHINES

Steinbachstrasse 133

3001 Mauerbach

Austria

[www.cm-tech.at](http://www.cm-tech.at)

T: +43 (0)1 577 24 18